



BIDDLE FARMS

TOWNHOMES



HARTFORD PORTER B PORTER A PORTER A PORTER B HARTFORD

Social



Contact



865-966-8700



info@saddlebrookproperties.com



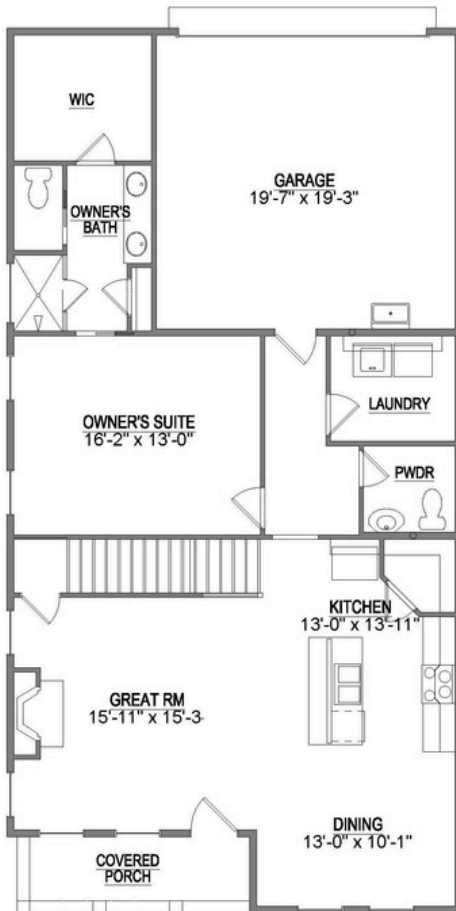
saddlebrookproperties.com

Saddlebrook Properties, LLC uses pictures, elevations and floor plans for illustrative marketing purposes only. Saddlebrook's working construction documents & codes take precedent in guiding the constructions of each home. Measurements, prices and specifications are subject to change without notice. All offerings are subject to errors and omissions.

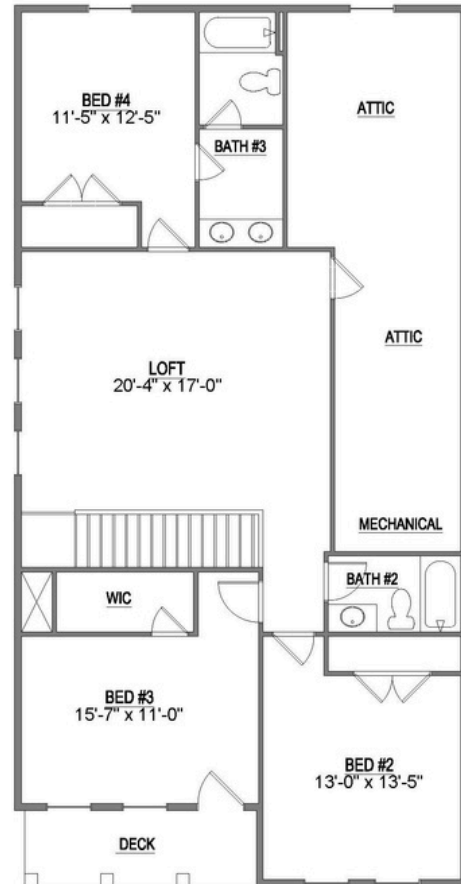
HARTFORD



Main Floor






Second Floor



Square Footage

Total Living Area 2536 Sq. Ft.
Main Floor 1255 Sq. Ft.
Second Floor 1281 Sq. Ft.

Home Features

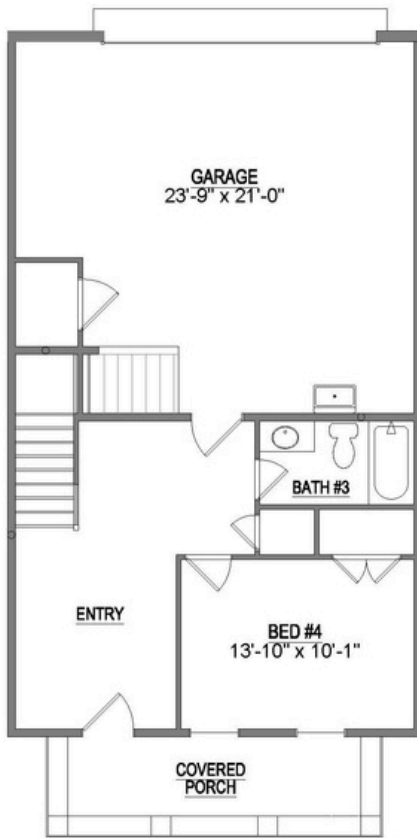


 4 Bedrooms 3.5 Bathrooms

 2 Garage Bays

Lots Available

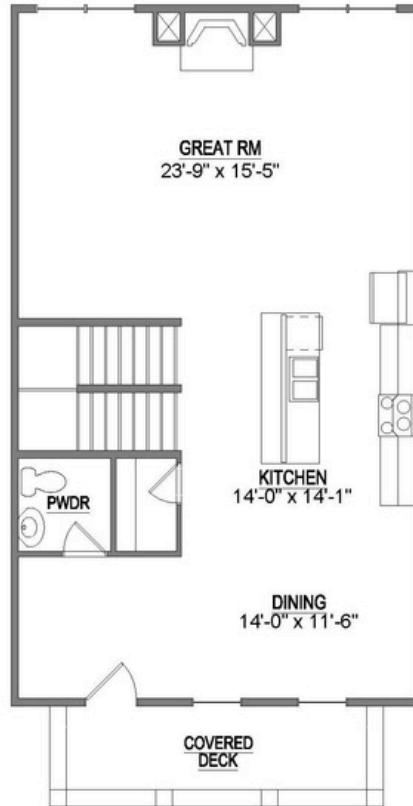
Hartford
Available On Lots:
 07, 18, 23

Saddlebrook Properties, LLC uses pictures, elevations and floor plans for illustrative marketing purposes only. Saddlebrook's working construction documents & codes take precedent in guiding the constructions of each home. Measurements, prices and specifications are subject to change without notice. All offerings are subject to errors and omissions.

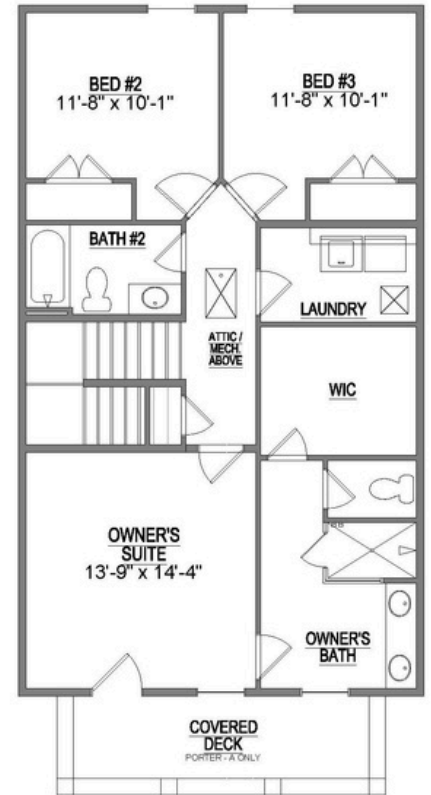
First Floor



Main Floor



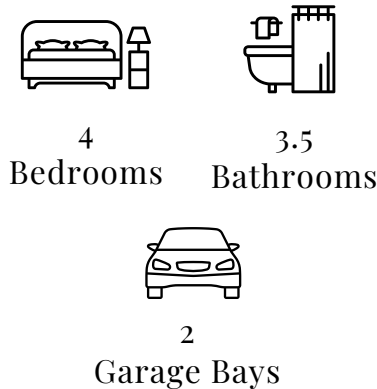
Third Floor



Square Footage

Total Living Area	2488 Sq. Ft.
First Floor	490 Sq. Ft.
Main Floor	1036 Sq. Ft.
Third Floor	962 Sq. Ft.

Home Features



4 Bedrooms 3.5 Bathrooms

2 Garage Bays

Lots Available

Porter A
Available On Lots:
09, 10, 13, 16

Porter B
Available On Lots:
08, 11, 12, 14, 15, 17

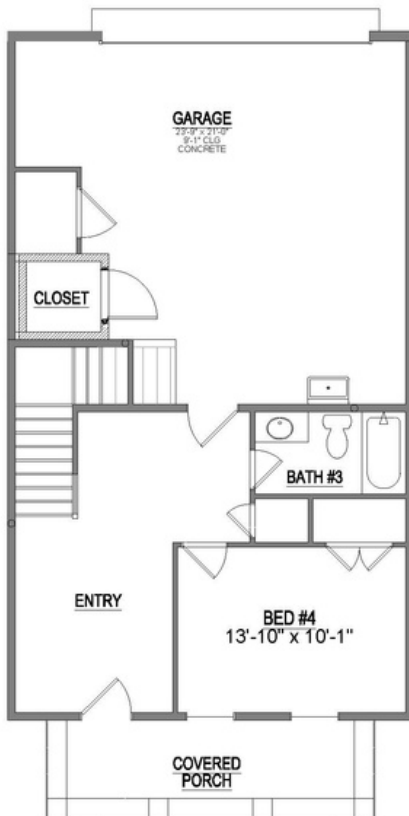
Saddlebrook Properties, LLC uses pictures, elevations and floor plans for illustrative marketing purposes only. Saddlebrook's working construction documents & codes take precedent in guiding the constructions of each home. Measurements, prices and specifications are subject to change without notice. All offerings are subject to errors and omissions.

PORTER

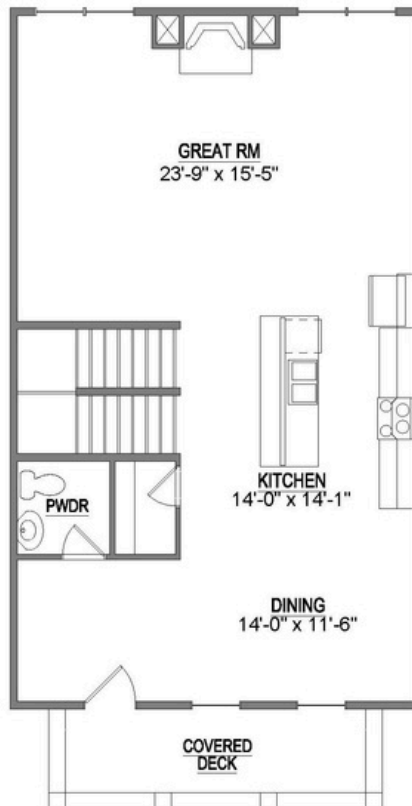


Bed 2 Suite & Elevator Shaft

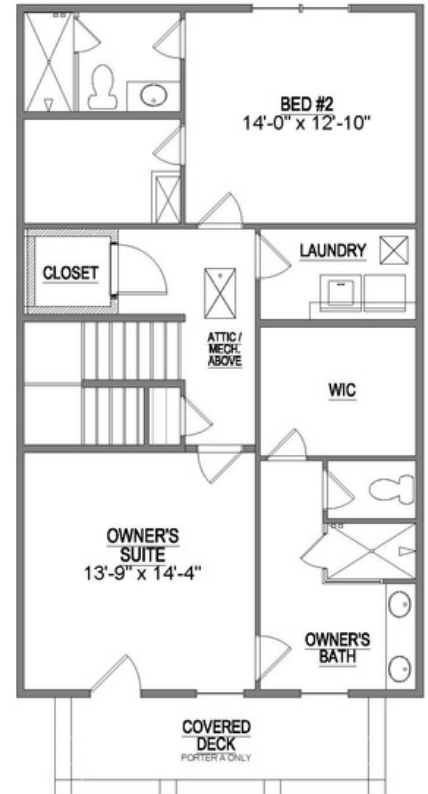
First Floor



Main Floor




Third Floor




Square Footage

Total Living Area	2488 Sq. Ft.
First Floor	490 Sq. Ft.
Main Floor	1036 Sq. Ft.
Third Floor	962 Sq. Ft.

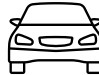
Home Features



3
Bedrooms



3.5
Bathrooms



2
Garage Bays

Lots Available

Porter A
Available On Lots:
20, 21

Porter B
Available On Lots:
19, 22

Saddlebrook Properties, LLC uses pictures, elevations and floor plans for illustrative marketing purposes only. Saddlebrook's working construction documents & codes take precedent in guiding the constructions of each home. Measurements, prices and specifications are subject to change without notice. All offerings are subject to errors and omissions.